



GOOD MORNING
Have Good Trading Day

WEDNESDAY



Price is what you pay.
Value is what you get.

- Warren Buffet



MARKET PULSE

INDIAN INDICES

NAME	CMP	NET CH.	%
SENSEX	25816	+189	+0.74
NIFTY	7914	+64	+0.82

INDIAN ADR'S

SYMBOL	CLOSE	GAIN/ LOSS %
DRREDDY	47.25	+0.65
HDFCBANK	63.40	+0.15
ICICIBK	7.35	+0.09
INFY	19.35	+0.06
TATAMOTOR	30.79	+0.25
WIPRO	12.97	+0.09

FII AND MF ACTIVITY

SYMBOL	In Crs.
FIIs Eq (Provisional)	977.98
FIIs Index Future	631.01
FIIs Index Options	654.58
FIIs Stock Future	1026.46
FIIs Stock Options	-74.88
DII's Eq (Provisional)	-313.22

CURRENCY

RBI RATE	18-APR-2016
RUPEE - \$	66.6663
EURO	75.2596
YEN 100	61.7300
GBP	94.3928

MARKET PULSE

GLOBAL INDICES

NAME	CMP	NET CH.	%
DOW	18053	+49	+0.27
NASDAQ	4940	-19	-0.40
NIKKEI	16977	+102	+0.61
HANG SENG	21312	-124	-0.58
SGX NIFTY	7975	-15	-0.18

WORLD COMMODITIES

FUTURE	US\$	CHANGES
CRUDE	41.85	-0.62
NATURAL GAS	2.198	+0.010
GOLD	1256.0	+1.70
SILVER	17.170	+0.198
COPPER	2.2205	-0.0030

WORLD EVENTS

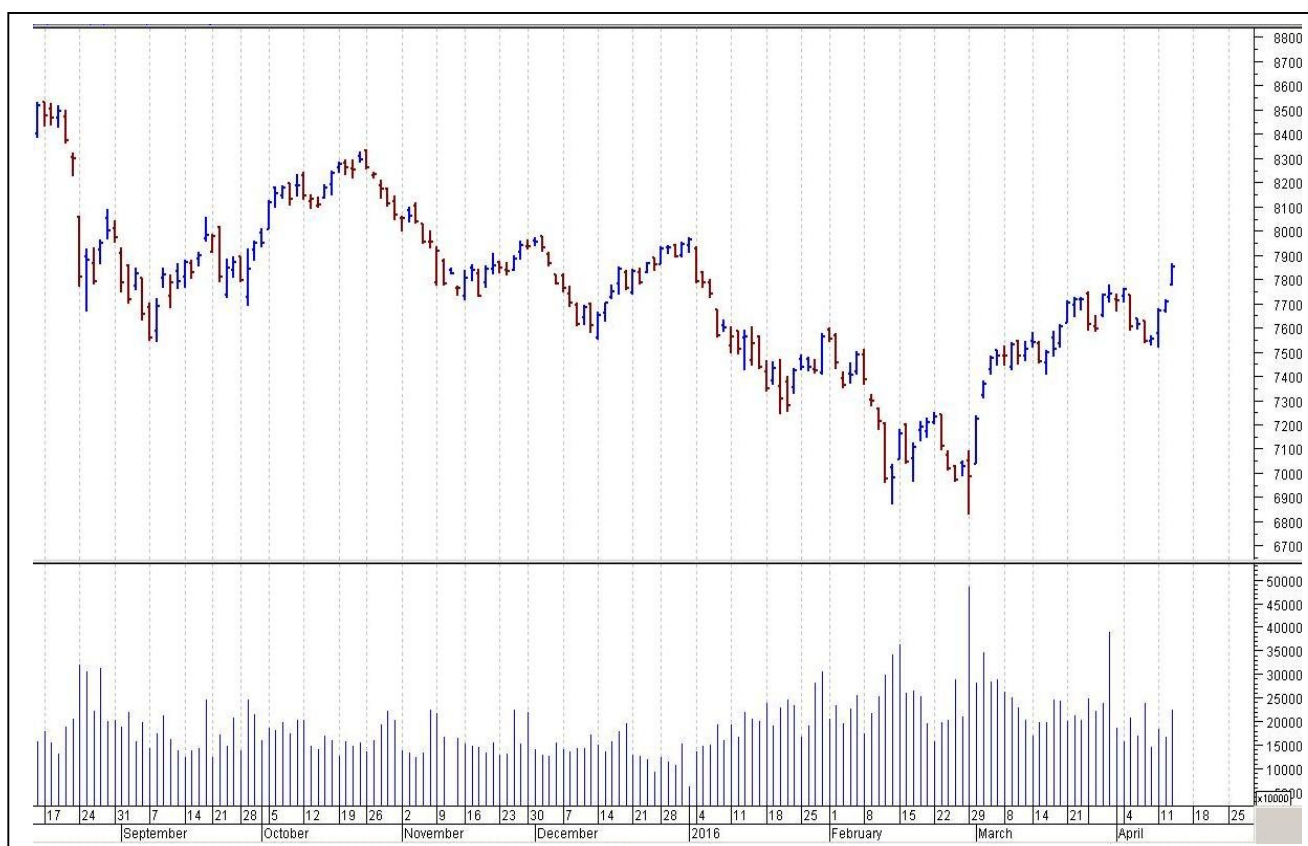
- US: Crude Oil Inventories
- UK: Average Earnings Index 3m/y
- Claimant Count Change

TOP STORY

- TCS Q4FY16 (QoQ) \$ Rev up 1.5% at \$4207m vs \$4145m Re Rev up 4% at Rs 28448.6 cr vs Rs 27364 cr. PAT up 3.8% at Rs 6341.2 cr vs Rs 6110 cr
- Gruh Finance Q4 Net Profit Up 18.5% At `87.8 Cr Vs `74.1 Cr (YoY). Income From Ops Up 20.3% At `367 Cr Vs `305 Cr (YoY)
- HDFC Board Approves IPO Process for HDFC Standard Life. Parent HDFC will sell 10% stake in Insurance arm
- UltraTech Cement Commissions 15th Grinding Unit At Pataliputra, Bihar
- Reliance Defence Says Board To Consider Augmenting Long Term Resources Via Rights Issue
- BEML signs MoU with Dredging Corp for development and manufacture of spares for dredgers
- CRISIL Q1 Cons Net Profit Up 40% At `78.6 Cr Vs `56.3 Cr (YoY)



NIFTY CHART



MARKET COMMENTARY

Indian equity Benchmarks showcased yet another courageous performance and went on to outclass indices around the world, by vivaciously rallying around a percent in the session and settling above the psychological 7,900 (Nifty) and 25,800 (Sensex) levels. Investors continued building hefty across the board positions as sentiments got a boost after India's wholesale prices Index (WPI) fell for the 17th straight month in March, with the WPI-based inflation declining 0.85% from a year ago on the back of falling prices of manufactured products. For today's trade Nifty likely to trade in the range between 7935 – 7935 in the upper side and 7885 – 7885 in the lower side.

MARKET LEVELS

	CMP	SUPPORT LEVELS				RESISTANCE LEVELS			
NIFTY	7914	7885	7865	7835	7785	7935	7965	7995	8035
USDINR	66.64	66.6	66.55	66.5	66.4	66.7	66.8	66.85	66.95



BULK DEALS (BSE)

SCRIP	CLIENT NAME	BUY/SELL	QUANTITY	PRICE
BERLDRG	SKA SECURITIES AND FINANCIAL SERVICES PRIVATE LTD	S	30,000	32.5
EXCEL	BUDDHISAGAR SHARES AND SERVICES PRIVATE LIMITED	B	185,044	39.08
ZEELEARN	MORGAN STANLEY ASIA SINGAPORE PTE	B	2,145,126	30

BULK DEALS (NSE)

SCRIP	CLIENT NAME	BUY/SELL	QUANTITY	PRICE
GEECEE	KOKAN SHUHABUDDIN SHAHNAZ	BUY	136829	136.43
ZEELEARN	MORGAN STANLEY ASIA SINGAPORE PTE	BUY	2445162	30

SCRIP'S IN F&O BAN

(To resume for normal trading below 80% of market wide limit required)

NIL

Initial Public Offering (IPO)

Company Name	Security type	Issue Start Date	Issue End Date	Status
Equitas Holdings Ltd	Equity	Apr 5, 2016	Apr 7, 2016	Closed
Thyrocare technologies	Equity	Apr 27, 2016	Apr 29, 2016	Forthcoming



NIFTY 50 STOCKS: SUPPORT & RESISTANCE						
Symbol	Close	Support 1	Support 2	Pivot Point	Resistance1	Resistance2
ACC	1464	1445	1425	1457	1476	1489
ADANI PORTS	231	227	223	232	236	241
AMBUJACEM	229	226	224	230	233	237
ASIANPAINT	885	878	871	882	890	894
AXISBANK	445	440	434	443	448	452
BAJAJ-AUTO	2544	2514	2483	2562	2593	2641
BANKBARODA	148	146	144	149	151	154
BHARTIARTL	359	353	347	358	364	369
BHEL	132	131	129	133	134	136
BOSCHLTD	20061	19780	19499	20015	20296	20531
BPCL	970	937	904	958	991	1013
CAIRN	149	147	145	149	151	153
CIPLA	524	512	500	519	531	538
COALINDIA	276	274	272	276	278	281
DRREDDY	3091	3039	2987	3074	3126	3161
GAIL	359	355	351	362	366	372
GRASIM	4091	4032	3974	4071	4129	4168
HCLTECH	853	845	837	853	861	869
HDFC	1132	1104	1076	1122	1150	1168
HDFCBANK	1088	1076	1063	1084	1096	1104
HEROMOTOCO	3055	3013	2972	3087	3128	3201
HINDALCO	97	95	93	96	98	99
HINDUNILVR	899	889	878	897	907	915
ICICIBANK	237	233	229	239	243	248
IDEA	121	117	113	119	123	126
INDUSINDBK	988	979	970	986	996	1003
INFY	1239	1226	1212	1247	1260	1281
ITC	335	332	328	335	339	342
KOTAKBANK	683	664	644	677	697	711
LT	1253	1222	1192	1240	1270	1288
LUPIN	1575	1546	1517	1572	1601	1627
M&M	1341	1320	1299	1337	1358	1376
MARUTI	3719	3683	3646	3716	3753	3786
NTPC	140	137	135	138	141	142
ONGC	208	205	203	208	211	214
PNB	83	81	79	83	84	86
POWERGRID	146	144	141	145	148	149
RELIANCE	1065	1058	1051	1062	1069	1074
SBIN	187	184	182	188	190	194
SUNPHARMA	838	830	822	835	844	849
TATAMOTORS	407	403	399	407	411	414
TATAPOWER	70	69	68	70	70	71
TATASTEEL	336	330	324	333	339	343
TCS	2520	2455	2391	2504	2569	2618
TECHM	477	472	467	477	482	487
ULTRACEMCO	3406	3288	3170	3353	3470	3535
VEDL	98	94	90	96	99	101
WIPRO	589	581	573	588	595	602
YESBANK	894	871	848	884	907	920
ZEEL	408	400	393	405	412	417

NEWS & RUMOURS:

- Gold (Spot Dollar) major support = \$1221/\$1191 & Resistance = \$1290/\$1321.
- Crude oil range->\$36 to \$46.
- Global Stocks Rally on Crude, Earnings as Emerging Markets Jump: - U.S. stocks joined an advance by global equities, with the Standard & Poor's 500 Index topping 2,100 for the first time since Dec. 2, as oil rallied past \$40 a barrel to lift emerging-market assets.
- Silver rallies to 10-month highs, boosts gold: - Silver prices rallied to the highest level in 10 months on Tuesday, boosted by the softer dollar and signs of stabilization in China, while gold also rose, tracking gains in silver. With more than 50% of silver demand coming from industry, prices have been boosted by recent indications that China's economy is stabilizing after a turbulent start to the year.
- Natural gas price rises more than 4%: - U.S. natural gas prices rose more than 4% on Tuesday, building on the previous session's gains as [a recovery in oil prices](#) after steep declines in the previous session saw risk appetite sharpen. Natural gas ended the previous session with gains of 2.76% after updated weather forecasting models called for some colder-than-average temperatures in the next two weeks, which could increase natural gas consumption.
- Oil rises as Kuwaiti strike cuts output for third day: - Oil prices rose on Tuesday as a strike by oil workers in Kuwait nearly halved crude production from the OPEC member, overshadowing bearish sentiment following Sunday's failure by producers to agree to freeze output levels. Thousands of Kuwaiti oil workers downed tools for a third day on Tuesday to protest against planned public sector pay reform, cutting crude output to 1.5 million barrels per day (bpd).

TRENDS & OUTLOOK – DATE: 20- Apr- 2016

PRECIOUS METALS:

COMMDITY (MCX)	S2	S1	PIVOT POINT	R1	R2
GOLD (June)	28770	29030	29271	29667	29871
SILVER (May)	37200	38300	39400	40786	41400

BASE METALS

COMMDITY (MCX)	S2	S1	PIVOT POINT	R1	R2
COPPER (Apr)	312	317	322	329	334
ZINC (Apr)	121.30	124.20	126.30	129.40	132.75
LEAD (Apr)	111.25	113.20	115.90	118.60	121.30
NICKEL (Apr)	581	592	606	630	645

ENERGY

COMMDITY (MCX)	S2	S1	PIVOT POINT	R1	R2
CRUDE OIL (May)	2590	2700	2801	2930	3036
NATURAL GAS (Apr)	124	129	133	140	145

DATE TALKS : TODAY'S ECONOMIC DATA :

Claimant Count Change of GBP, ECB President Draghi Speaks, Existing Home Sales, Crude Oil Inventories.



Registered Office

Indira House, 3rd Floor, 5 Topiwala Lane,
Opp. Lemington Road Police Station, Grant Road (East), Mumbai - 400007.

Corporate Office

'Ramavat House' E-15, Saket Nagar, Indore - 452018 (M.P.)

Customer Care

Tel: +91-731-4097170/ 71/ 72/ 73/ 74 M. +91 93031 72345

Email: customercare@indiratrade.com www.indiratrade.com



INSTITUTIONAL DEALING UNIT

Africa House, 5, Topiwalla Lane, Lamington Road, Mumbai, 400007

Tel: +91 22 30080678 Fax : +91 22 23870767 Email : ie@indiratrade.com

Disclaimer

This report is for private circulation within the Indira Group. This report is strictly confidential and for information of the selected recipient only and may not be altered in any way, transmitted to, copied or distributed, in part or in whole, to any other person or to the media or reproduced in any form. This report should not be construed as an offer or solicitation to buy or sell any securities or any interest in securities. It does not constitute a personal recommendation or take into account the particular investment objectives, financial situations, or any such factor. The information, opinions estimates and forecasts contained here have been obtained from, or are based upon, sources we believe to be reliable, but no representation of warranty, express or implied, is made by us to their accuracy or completeness. Opinions expressed are our current opinions as of the date appearing on this material only and are subject to change without notice.